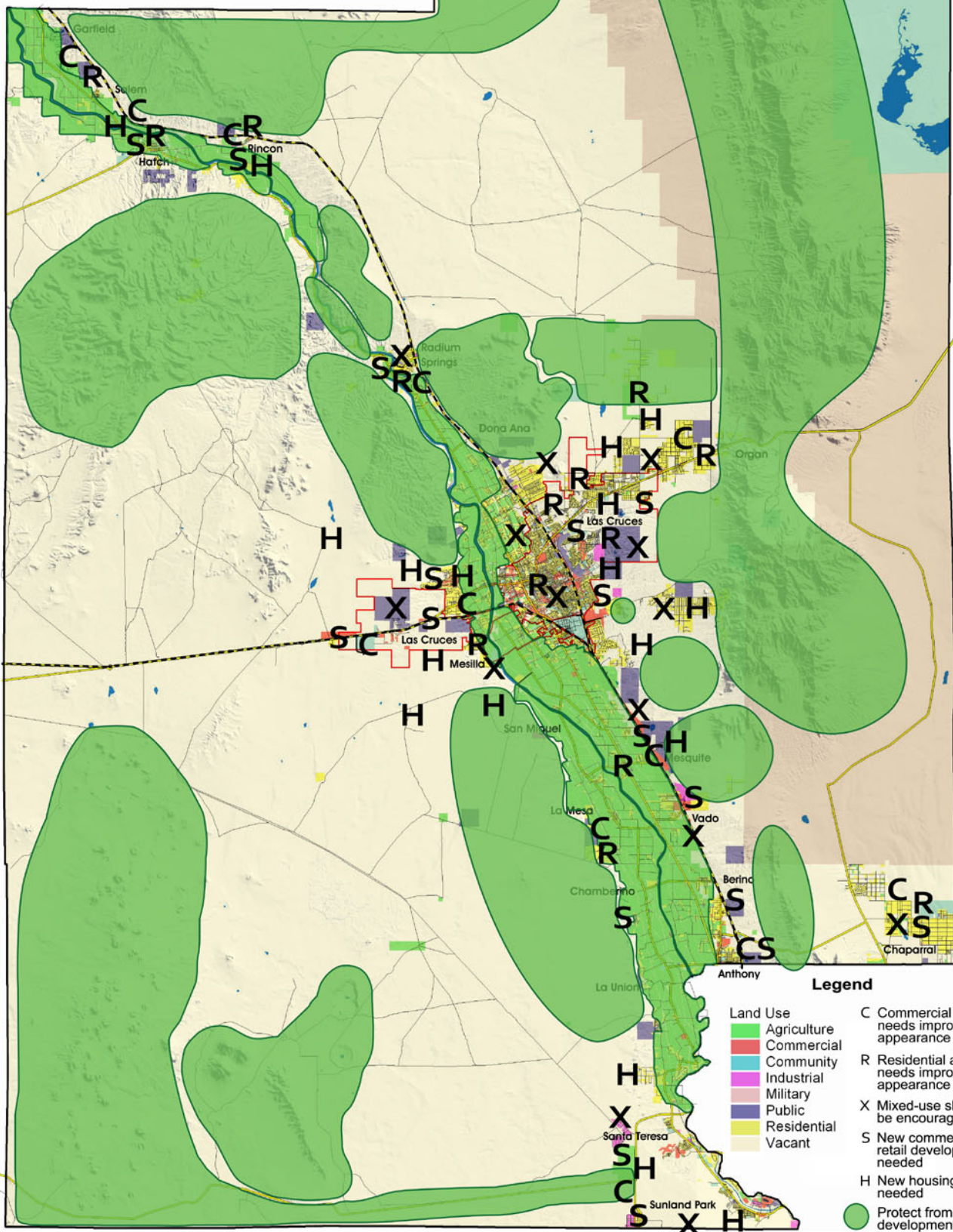


# Summary of Issues- Land Use and Environment










Public workshops held March 3-7, 2008



0 5 10 Miles



### Legend

- |   |  |
|---|--|
|  Agriculture | C Commercial area needs improved appearance  |
|  Commercial  | R Residential area needs improved appearance   |
|  Community   | X Mixed-use should be encouraged   |
|  Industrial  | S New commercial/retail development needed   |
|  Military    | H New housing needed   |
|  Public      |  Protect from development |
|  Residential |  |
|  Vacant      |  |